



Lifelong Faith Associates



COACHING  
to  
CONNECT

*Practical help for productive relationships*

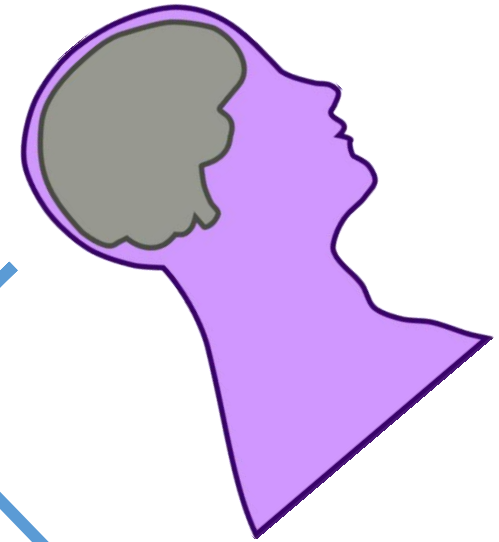
# The Practical FF Stuff for Middle Adults

Jim Merhaut

[www.CoachingToConnect.com](http://www.CoachingToConnect.com)

# Keep in Mind...

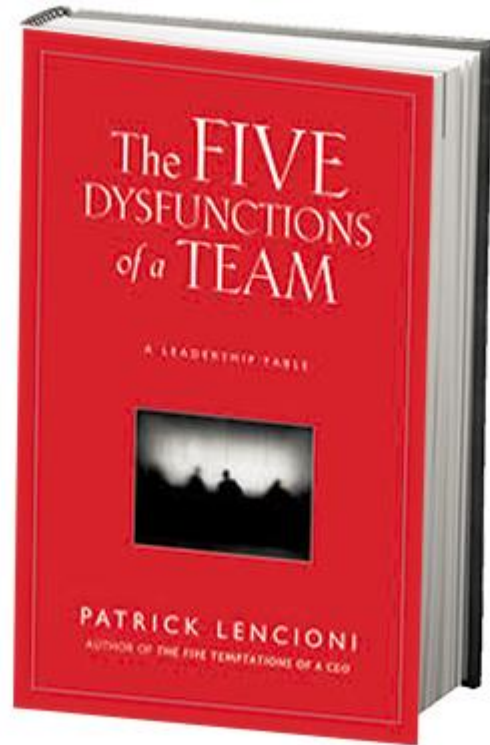
- Super-high functionality
  - Enormous know-how
  - Danger of functionalism
- Quest for intimacy
  - Movement towards the significant other
  - Watch for relationship escapism
- Generativity & the Sandwich
  - Rich family & intergenerational opportunities
  - Very busy meeting the needs of children and parents
- The Mid-Life Crisis
  - Openness to mystery and transcendence and deep personal connection
  - Watch for tendency to become rigid/cynical in thinking or for passivity/withdrawal
- Religious Preferences
  - Dynamic, sensual, experiential, entrepreneurial, inclusive, non-dualistic, hi-tech, relevant
  - Be careful not to commercialize and commodify religion



For Gen X, Conflict is Familiar

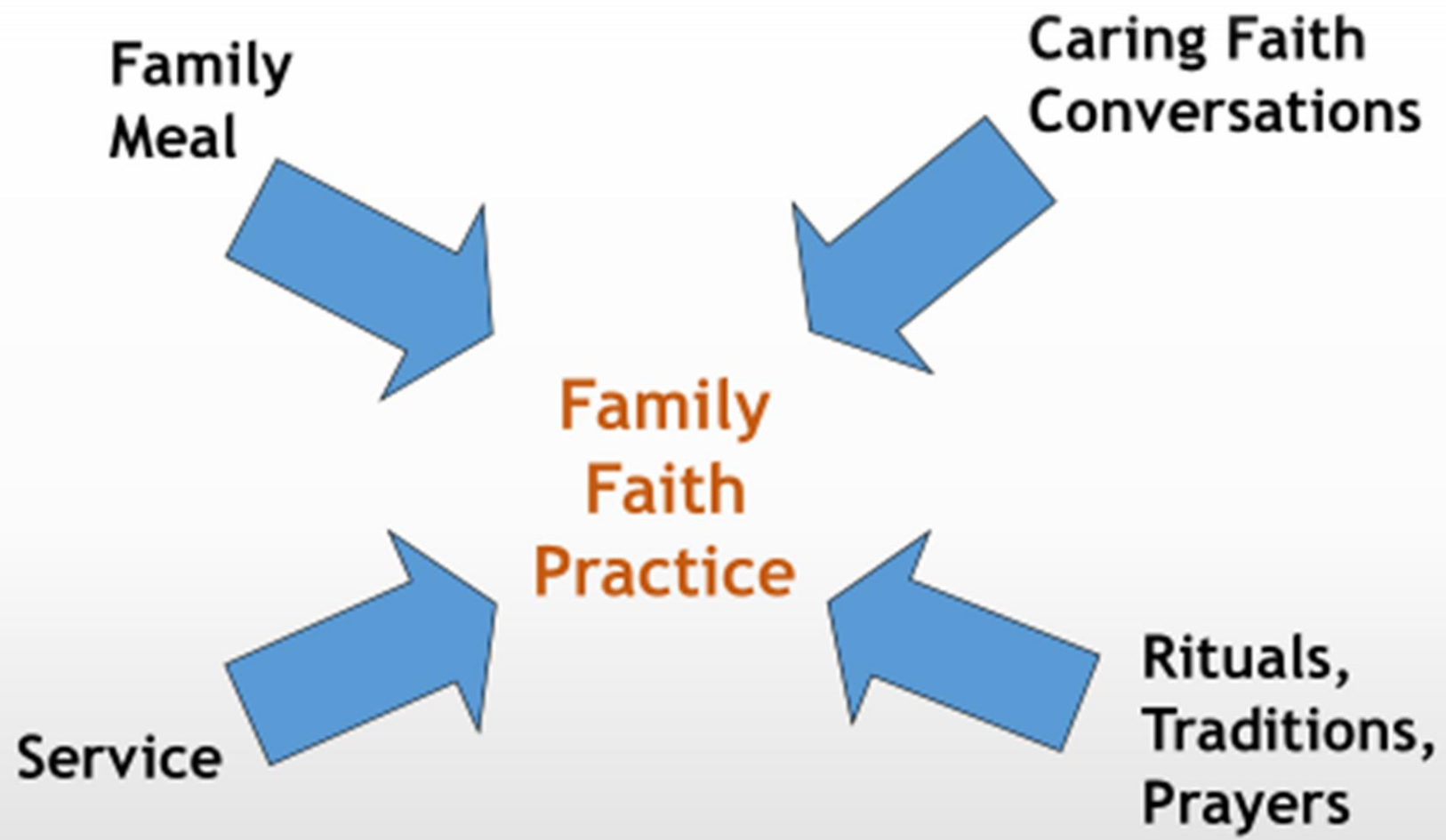


# Trust and Conflict



# Young Gen X and Family

- Parenting matters to X
  - Children of divorce
  - The latch-key kids
- Programming for Family
  - FIRE (**F**amily-centered **I**ntergenerational **R**eligious **E**ducation)
  - Logos (GenOn Ministries)
  - Vibrant Faith at Home
  - Fashioning Faith
  - Families on a Mission



# Mid-Life Crisis

- A Truly Pivotal Developmental Moment
- Gathered Program vs. Non-Gathered Resources
  - Resources on your website
  - Email Series to adults at midlife
  - Webinars
  - Podcasts
  - Pamphlets
- Promote the non-gathered resources
- Find a way to quantify the non-gathered resource usage

# Middle Adult Worship

- Multi-Sensual
- Digital
- Authentic
- Inclusive
- Non-Dualistic
- Responsive & Adaptable
- Relevant



# Affordable Digital Tools in Ministry

- Website
- Communication with Targeted Audiences
- Podcasts
- Survey Software
- Webinar Software
- Email/Text blasts
- Social Media
- Live Streaming